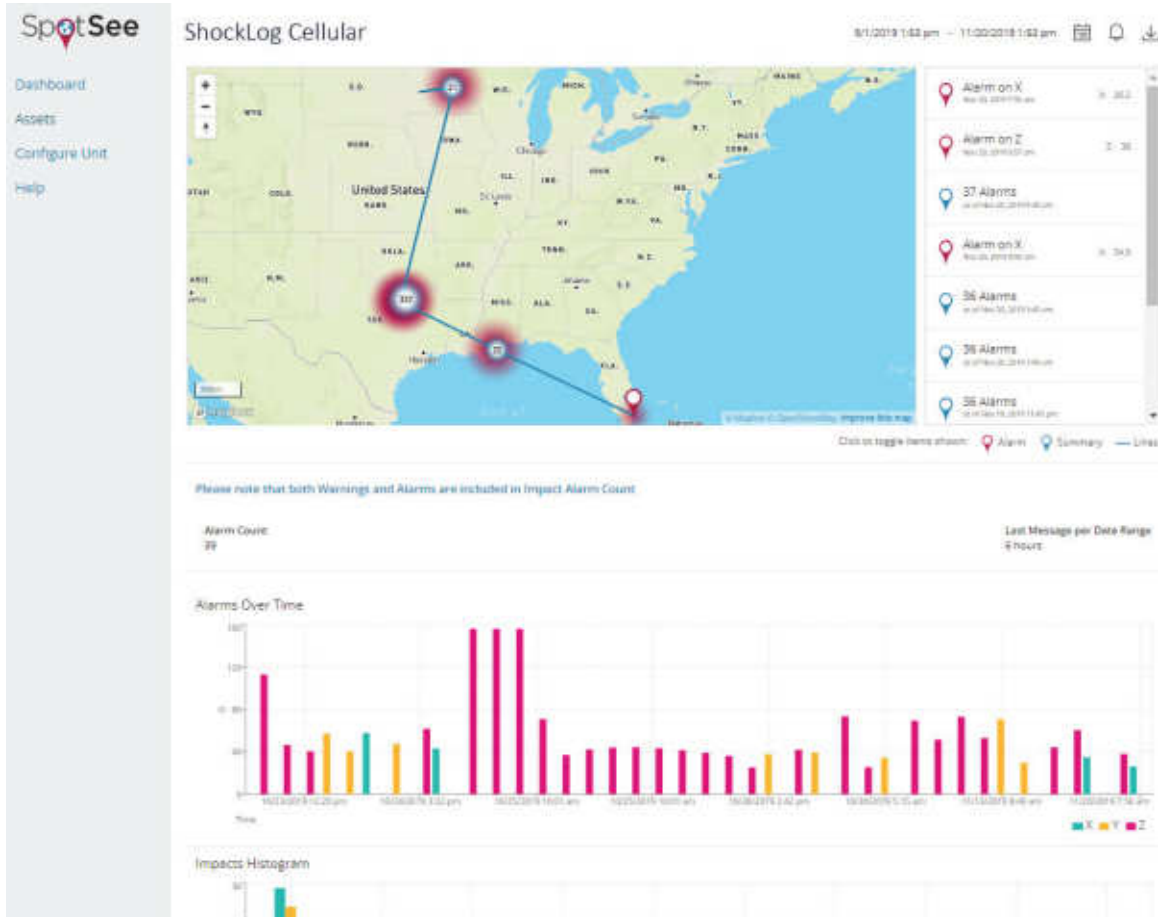


## ShockLog Cellular Overview



The ShockLog® Cellular combines the powerful monitoring capabilities of the ShockLog 298 impact recorder with a cellular communication module to deliver real-time notifications of unacceptable handling in the supply chain. This device alerts you when your shipment has experienced an out of tolerance impact, temperature, humidity, tilt, roll, or pressure condition. The information is accessible via the user friendly SpotSee Cloud from anywhere in the world. With cargo loss exceeding \$50 billion annually, transparency in the supply chain is key to improving your operations. The ShockLog Cellular enables you to know that your assets are traveling safely to their destination and if something has gone wrong, you know when and where the issue occurred.

### Features:

- Real-time notification of out of tolerance handling conditions
- Easy to use cloud-based interface that is accessible anywhere in the world
- Global low-cost connectivity with no roaming charges
- Robust battery life ideal for long journeys
- Connects to any new or existing ShockLog 298\*

\*Firmware version 30 or greater

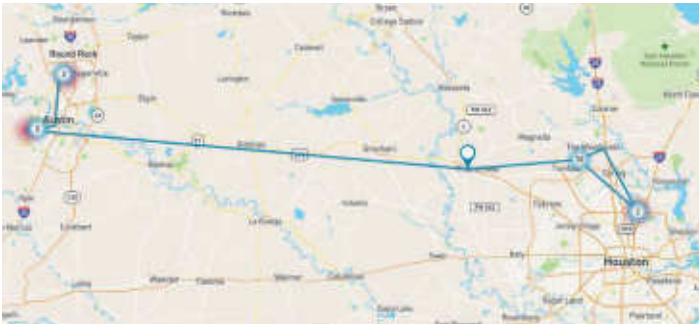
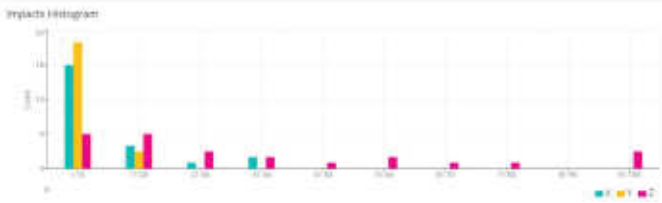
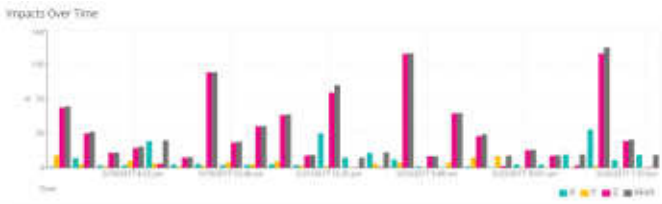


# ShockLog Cellular Overview

The SpotSee Cloud is where trip data is aggregated in real-time. The graphs are easy to read and illustrate where and when unacceptable conditions occurred.

## SpotSee Cloud Features

- Access to your data from anywhere through a secure web portal
- Real-time reporting and tracking of incidents
- Alarms with location, time, and out of tolerance condition
- Impacts-over-time visualization of each asset
- Histogram of the total impacts to an asset
- Time-temperature, humidity, tilt/roll graphs



## ShockLog Analysis Software

At the end of the journey, if alarm conditions need to be further analyzed, the full data set can be downloaded into the ShockLog software for a more detailed view of the recorded data. The ShockLog Report View provides an overview of the entire journey: peak acceleration values for all three axes, detailed impact curves, and temperature. Additional parameters may be evaluated if the ShockLog has additional sensors installed: humidity, pressure, tilt, roll.

Key Specifications	
<b>Operating Temperature Range:</b>	-30C to 85C / -22F to 140F
<b>Size:</b>	7" x 5.25" x 1.375" 178mm x 133.5mm x 35 mm
<b>Weight:</b>	590g with batteries 500g without batteries
<b>Battery:</b>	1.5V AA lithium batteries (6)
<b>Battery Life:</b>	Up to 75 days (1 summary/hr) Up to 190 days (1 summary/day)
<b>Sealing</b>	IP67
<b>Communications:</b>	Global Cellular 3G / 2G with no roaming charges

